

Case Study

# Crisis Response Capabilities

**cyber**security  
associates

## Case Study

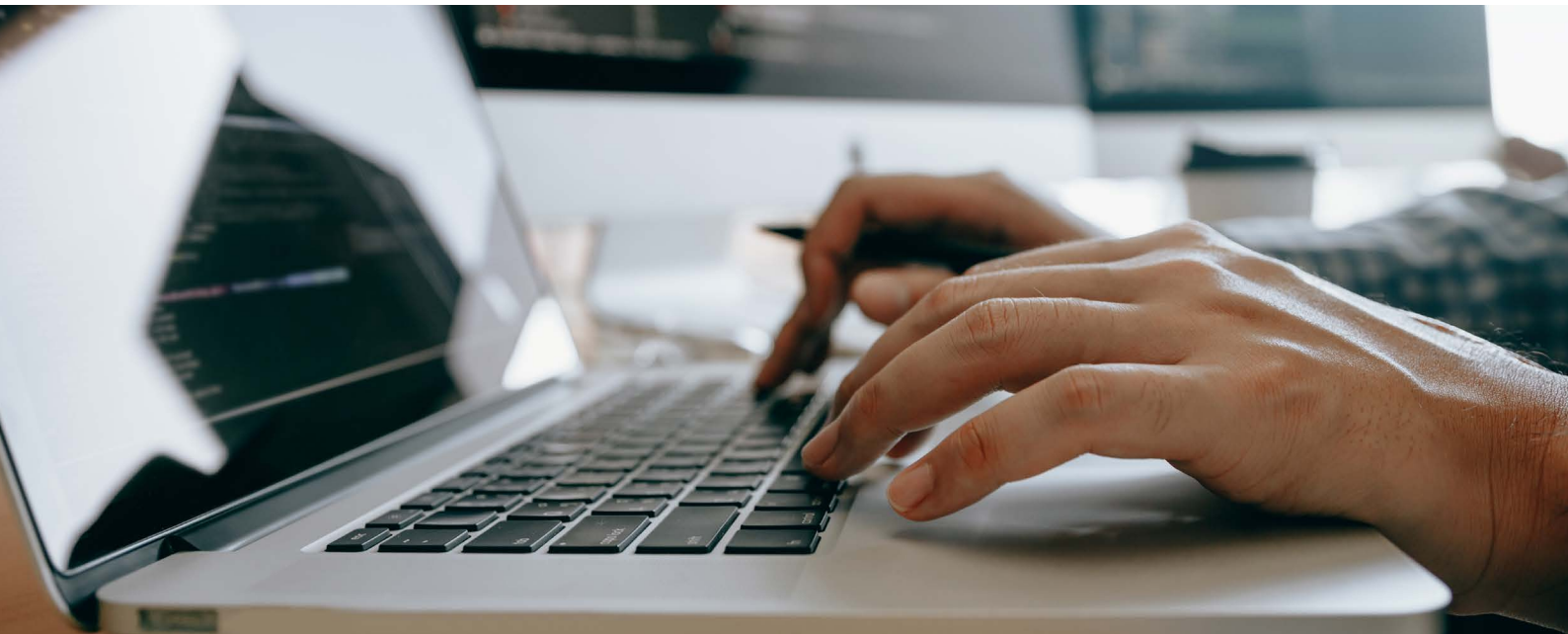
# Crisis Response Capabilities

**When a company falls victim to a cyber-attack it can be a difficult situation to resolve on their own without the right guidance and tools. For any cyber attack, timing is crucial. It is essential to respond swiftly to avoid any further damage.**

CSA's crisis response capability was requested at short notice to assist a large transport haulage company who had been victim to fraudulent financial transactions. At the time, it was unknown how large sums of funds had been paid to the cyber-criminal instead of legitimate suppliers.

CSA immediately deployed an Incident Responder directly to the site following an initial investigation via phone and email to troubleshoot the cyber-attack and determine how the criminal was able to gain access. It was soon established that the cyber-criminal gained access to the company's finance computer and, alarmingly, was still present. By reacting swiftly, the cyber-criminal access was removed to prevent further losses and damage. Further investigation uncovered that the criminal had gained access by downloading malicious software after an employee had clicked on a link received from an email.

To avoid any future security breaches, CSA recommended the company adopt CSA's monitoring package together with user awareness training for all employees. The CSA crisis response capability helped the company at a critical time when no-one else could and can now ensure this type of attack is prevented from reoccurring.



**cyber**security  
associates



Security  
Operations Centre



Training



Monitoring, Detection  
and Protection



Response



Consulting



Cyber Assessments



Cyber Executives